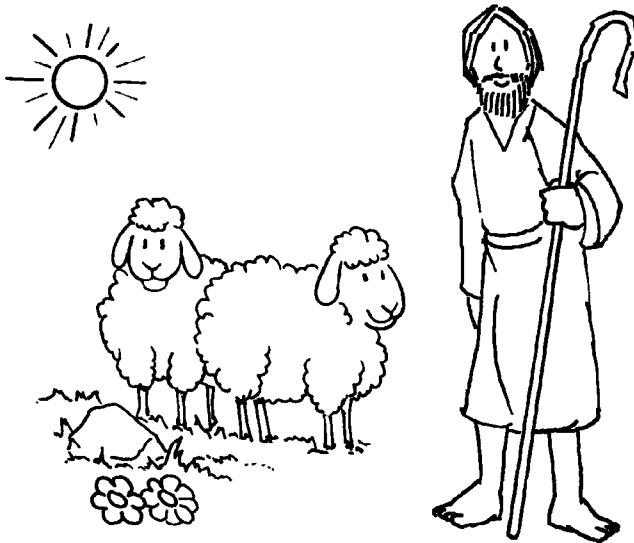
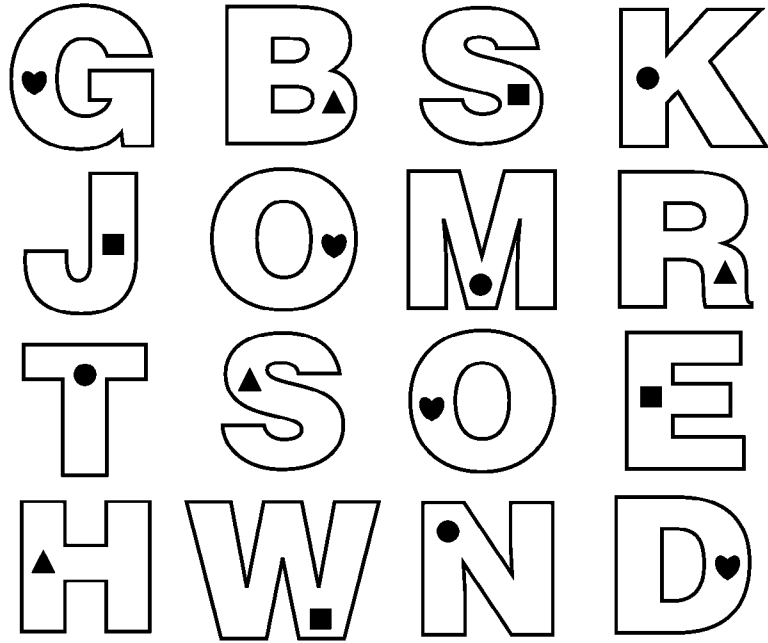


What kind of Shepherd is Jesus?

Shade in the letters that have a ♥.



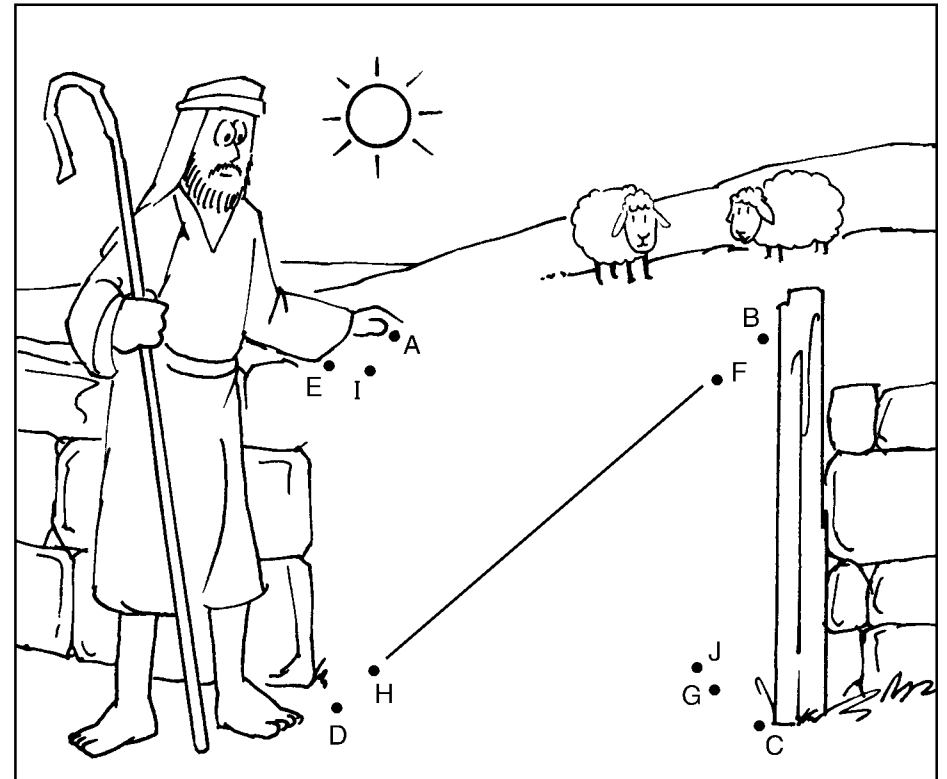
Ages 3+

April 26, 2026 • John 10:1-10

The Good Shepherd

The shepherd enters by the gate.

Connect the dots: A B C D E F G H I J



 TRINITY LONE OAK
LUTHERAN CHURCH
& SCHOOL

Trinity Lone Oak Lutheran
2950 Highway 55
Eagan MN 55121

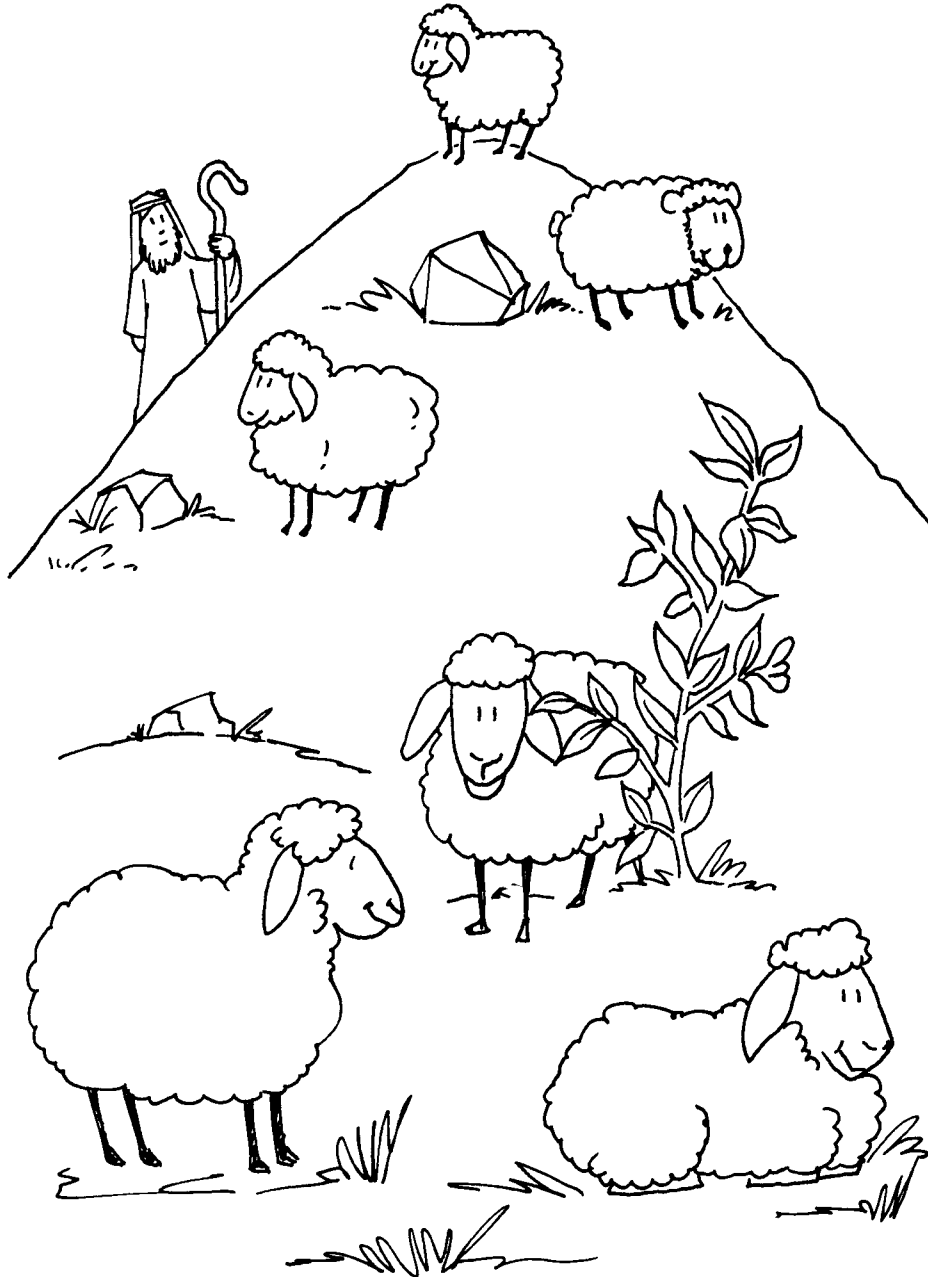
651-454-7255
trinityloneoak.org

Enter your **SECRET CODE** to unlock games @
games.childrensbulletins.com

SECRET CODE
VDX275

The sheep listen to the shepherd.

Count how many sheep. 6 or 7 ?



The shepherd knows each sheep by name.

Circle the matching sheep in each row.

